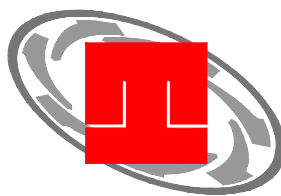
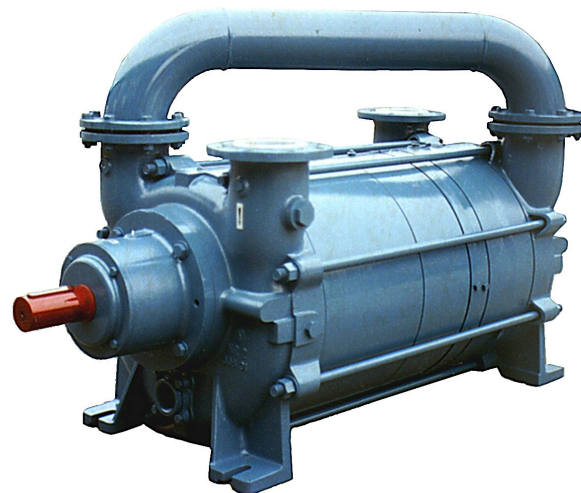


TRHA 150 Two-Stage Liquid Ring Vacuum Pump



travaini

- PRESSURE RANGE** : 25 to 150 TORR
CAPACITY : 800 to 2200 CFM
- FEATURES** : Two-stage rotating pump with externally located bearings grease lubricated.
- SHAFT SEALING** : Mechanical seal - Double mechanical seal - or Stuffing box optional.
- OPTIONS** : Bareshaft pump - Coupled to electric motor on baseplate - V-Belt driven.
- ACCESSORIES** : (Optional) Flange mounted air-liquid separator tank, non-return valve, vacuum relief valve, vacuum gauge and piped service liquid line with isolating valve, Y-strainer, 1/60/120 solenoid valve, flow regulating valve and compound gauge.



TECHNICAL DATA

PUMP TYPE		TRHE 150-2000		TRHA 150-2600		TRHA 150-3100	
Speed	RPM	730	880	730	880	730	880
Motor - installed power	HP	100	125	125	150	125	200
Avg. service liquid flow	GPM	40	40	44	44	53	53
Noise level @ 150 TORR	dB(A)	83	84	84	84	84	84
Min. suction pressure	TORR	25	25	25	25	25	25

STANDARD MATERIALS OF CONSTRUCTION**

PART No.	DESCRIPTION	GH	F	RA	A3
106	Suction Casing	Cast Iron			Stainless Steel AISI 316
107	Discharge Casing				
137	Port Plate				
110	Impeller Housing	Carbon Steel			
210	Shaft	Stainless Steel AISI 420			
147	Manifold	Carbon Steel			
357	Bearing Housing	Cast Iron			
230	Impeller	Bronze	Ductile Iron	Stainless Steel AISI 316	

MODEL DESIGNATION

TRHA 150 - 3100 / C / GH	
T	Travaini Manufacturer
R	Liquid Ring Pump
H	Two-Stage Pump
A	Design Number
150	Flange Size (mm)
3100	Nominal Capacity (m ³ /h)
C	Shaft sealing C = Mechanical Seal C2 = Double Mech. Seal B = Packing Seal
GH	Materials of Construction (see table)

** Special materials available upon request.

- Request information on our HYDROSYS and DYNASEAL engineered vacuum systems.
- For further information please consult Premier Fluid Systems Inc.



Premier Fluid Systems
Canadian Home of Travaini Pumps